



EMERGENCY READY PROFILE CHECKLIST

Property Type: Commercial Warehouse

Building Location

633 Napor Blvd Pittsburgh, PA 15205

Multi-tenant # of Floors 1

Tenant Name

Suite:100 Priority Express (Capstone)
Suite:200 NEHDS Logistics

Fire Company

Pittsburgh City Fire Bureau
Station #E31
3000 Chartiers Ave
Pittsburgh, PA 15204

Location to Park SERVPRO Vehicles

Parking lot adjacent to building

Preferred Building Access for Service

Main entry

Stairway Access for Service

External roof hatch in Suite 100.

Building Owner: Sampson Morris Group

Emergency Contact

Name – Property Manager
Email – 911@sampsonmorrisgroup.com
Phone # 412 374-1060

Emergency Restoration Contact

SERVPRO Team Wall
Greg Lavery – 724 434-9325

Security Company (monitoring)

Securitronics
Phone – 412 481-4200
Panel Pin # 7314K

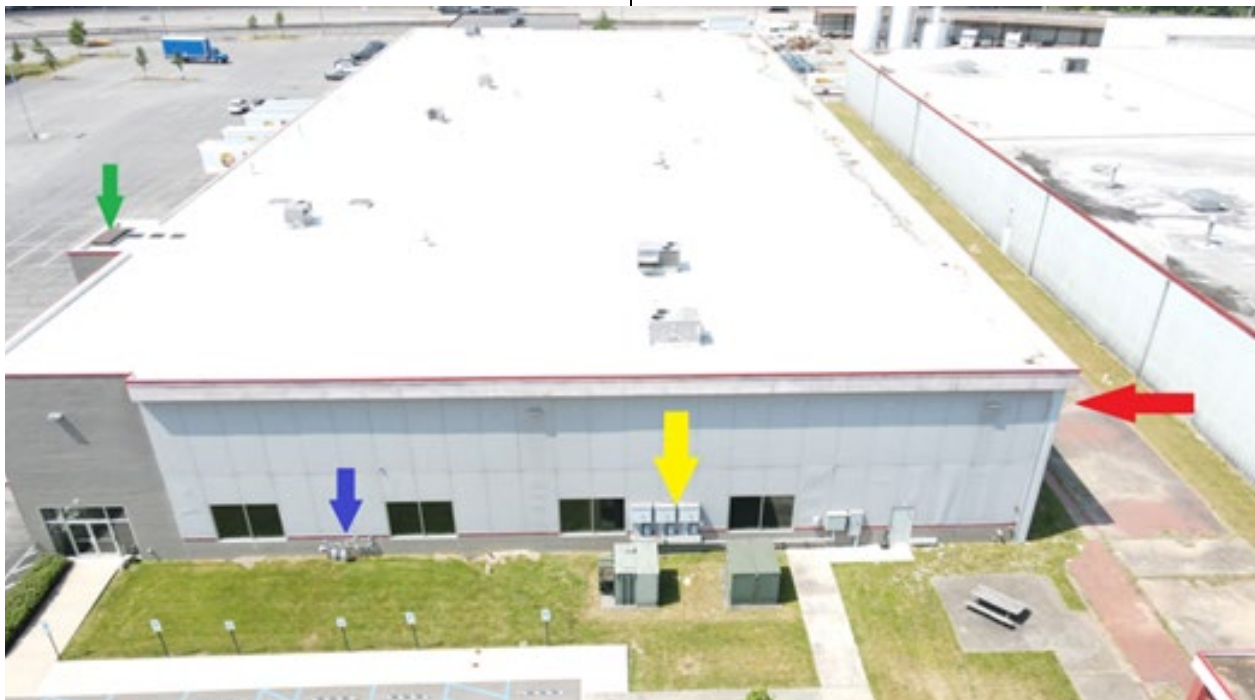
Sprinkler Maintenance

Interstate Fire Protection
Phone – 724 443-1822

Building Shut Off Locations /Color key defined:

- Red-** Water & Sprinkler Shut Offs (Interior Door Access)
- Blue-** Gas Shut Offs (External Main)
- Yellow-** Electrical Shut Offs (External Main)
- Green-** Roof Access Ladder

Building Lock Box:
Near Roof Access Stairwell Door
Lock Box Code: 2500
Key Opens: Stairwell Door



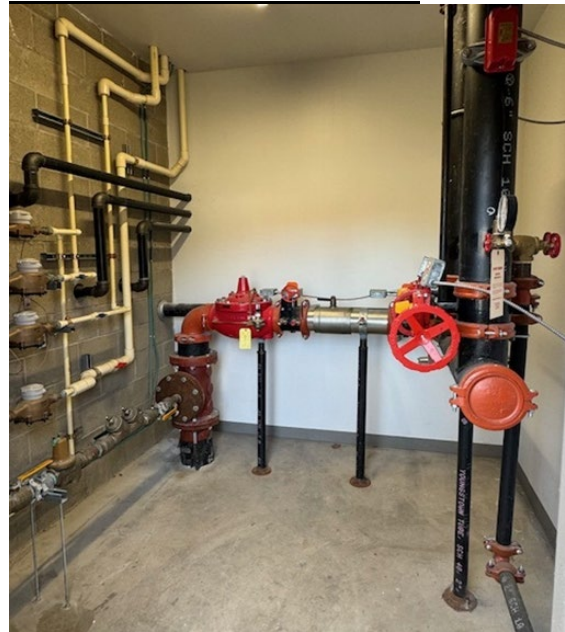
Exterior Roof Access Ladder



Exterior Electric Panel



Interior Water Main Shutoff



Interior Fire Panel



Exterior Gas Main Shutoff

