



EMERGENCY READY PROFILE CHECKLIST

Property Type: Commercial Warehouse

Building Location

2260 Roswell Pittsburgh, PA 15205

Multi-tenant # of Floors 1

Tenant Name

Suite:121 United Garage Door

Fire Company

Pittsburgh City Fire Bureau

Station #E31

3000 Chartiers Ave

Pittsburgh, PA 15204

Location to Park SERVPRO Vehicles

Parking lot adjacent to building

Preferred Building Access for Service

Main entry

Building Shut Off Locations/Color key defined:

Red- Fire Panel & Sprinkler Shut Offs

Blue- Water Shut Offs

Yellow- Electrical Shut Offs

Green- Gas Shut Offs (External Main)



Building Owner: Sampson Morris Group

Emergency Contact

Name – Property Manager

Email – 911@sampsonmorrisgroup.com

Phone # 412 374-1060

Emergency Restoration Contact

SERVPRO Team Wall

Greg Lavery – 724 434-9325

Security Company

IES INC.

Phone – 412 206-0400

Panel Pin # 2600-0803

Sprinkler Maintenance

IES INC.

Phone – 412 206-0400

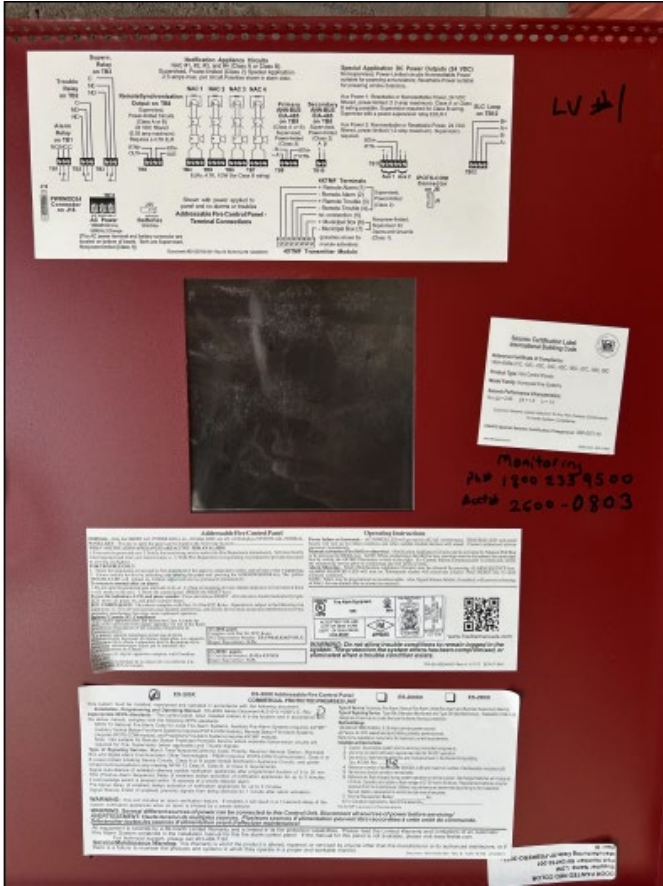
GATE:

4911

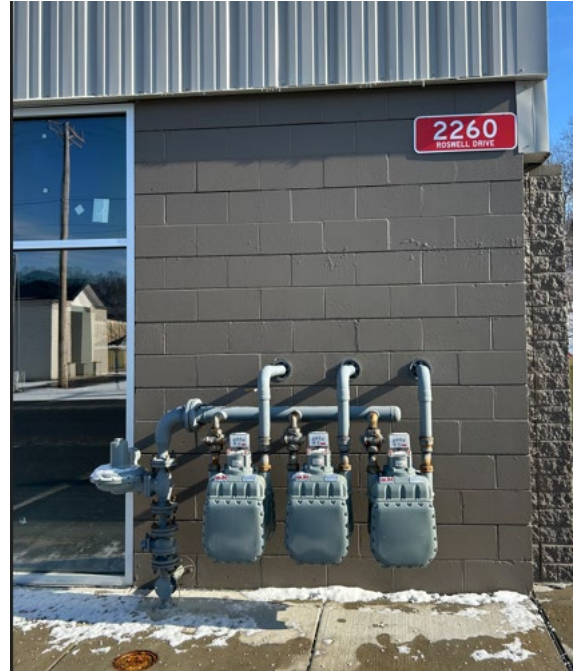
Lockboxes

2500

Interior Fire Panel



Exterior Gas Shutoff



Exterior Power Shutoff



Interior Water Shutoff

